

Illustration: Meg Hirata

Building Resilience in the Face of Adversity



In the 2020/21 year approved
163 grants totalling
\$9.5 million

Proudly retains 100% ownership of
Pioneer Energy currently valued at
\$116.1 million

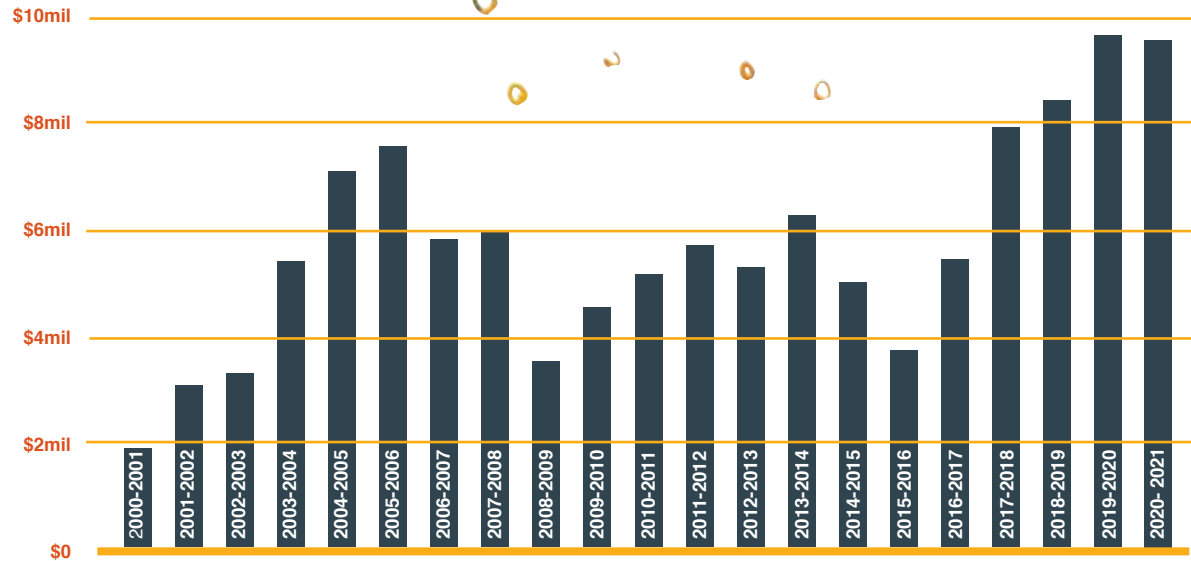
Total grants approved 2000-2021
\$118.4 million

Holds total investment assets of
\$450.0 million

Total dividends received from
Pioneer Energy since 2000
\$97.3 million

**TOTAL GRANTS
APPROVED**

**2000
-2021**



Financial Year (1 April - 31 March)

Cover illustration reproduced
with permission from
Remarkables Primary School -
COVID-19 Resilience in Schools
'Remarkable Stories from
Remarkable Writers' book

Chair and Chief Executive's report

What a year our 20th has been. We spent the most part of the first two months of the Trust's financial year in a State of National Emergency due to the COVID-19 pandemic. Our Central Lakes region was one of the hardest hit in New Zealand.

Despite what became a challenging investment environment at the end of our 2019/20 year, the board approved a similar grant budget of \$9.4 million for the 2020/21 financial year, which was allocated in full.

The Trust's ability to maintain the level of grants budget is primarily due to our well diversified investment portfolio. Just as the markets significantly negatively corrected at the end of the 2020 financial year, they have more than bounced back during this 2021 financial year with the Trust returning a 17% net investment return and a financial surplus for the parent entity of \$63.7m.

Pioneer Energy Ltd, which the Trust proudly retains 100% ownership of continues to provide significant support to our community by contributing \$10.6m in dividends and interest to CLT throughout the year. Like CLT, Pioneer has made significant gains this year reporting a surplus of \$57.4m, and once again like last year largely due to the volatility in the fair market value of derivatives at balance date.

Pioneer continues to focus on renewable energy opportunities with the Matiri hydro scheme officially opened in December 2020, while construction is well underway on the joint venture with Ecostock Supplies Ltd to create New Zealand's first large-scale food waste-to-bioenergy facility at Reporoa.

Positive returns have enabled the Trust to continue its investment into areas that have a social impact for our Central Lakes community. Our joint venture investment with Southern Cross Hospitals is progressing with an opening scheduled for late 2021 and the Southern DHB scheduling public procedures to commence in January 2022.

In addition we have further invested in the Queenstown Lakes Community Housing Trust (QLCHT) by supporting rental and secure home ownership development in the Hikuwai and Northlake areas. The Trust recognises more affordable housing is still a significant issue within our region and continues to keep this issue front of mind.

The success of the Trust's diversified investment portfolio has to be attributed to those with the skill base that steered it from an early time, in particular the late Sir Eion Edgar.

As we faced the challenges of 2020 together, the Trust knew there would be a growing impact on the charitable organisations we fund. This would inevitably present challenges in terms of both the type of need, and the increase in community need for funds. As part of our grants funding, 16 emergency top-up grants were funded to core service agencies mainly in the social service sector, to support the increase in demand and the complexity of need.

For Central Lakes Trust our 2020 year was perhaps not what we expected from 20 years serving our community. However, it allowed us to reap the benefits of the hard work from the preceding years and to be proud of everything we put in place to live and breathe our values so aptly depicted on the cover of this report.

Our organisation has moved significantly forward in its thinking and undertaken considerable change to see us to where we are today.

Our relationship management and partnership approach alongside a streamlined application system has enabled increased efficiency. It has allowed a shift to working out in the community, increasing our community presence and engagement, facilitating wider conversations to ensure we have a clear understanding of the issues confronting our region.

All these things enabled us to be prepared to react swiftly, but with understanding of the issues at hand and the changing needs of our community. It ensured we could get alongside and partner with organisations, to put funding where the true need was.

As a result, we have been able to support new organisations such as the Southern Wellbeing Trust, a Queenstown-based trust, set up in September 2020 to address mental health concerns in our community due to the COVID-19 pandemic. We have also supported new initiatives such as the mental health navigator role through Central Lakes Family Services which has been a real partnership between service providers, Southern DHB, WellSouth, local iwi and Queenstown Lakes District Council (QLDC).



Linda Robertson
Chair



Susan Finlay
Chief Executive

If there could be a theme for us all in this year 'resilience in the face of adversity' would be it. As a community we needed to be resilient, to deal with the uncertain time that was 2020, to be adaptable. It is how we deal with adversity and the outcomes achieved that shows the strength of a community.

The imposed constraints of COVID-19 affected our young too. Schools often rely on gaming machine or other community funding for extracurricular activities. In the absence of that funding we created a one-off COVID-19 resilience in schools initiative to assist in the recovery and wellbeing of our young, utilised by all schools within the Central Lakes region.

As last year drew on, we became acutely aware the longer-term impacts of COVID were, and still are very real, and the community's ability to be resilient continually tested. Our booked-out Nigel Latta 'Resilience' Tour of Central Lakes further supported our community in resilience building.

The Trust continues to look for opportunities to support our community as we learn to live in our COVID environment.

More recently we celebrated the opening of the Lake Dunstan Trail; stage one of five to link the Great Rides of New Zealand. This grant remains the Trust's largest ever grant at \$11.15m and a legacy asset for the community. For the many who joined us for the opening in May 2021, and since then to cycle the trail, we know this too goes a long way in building resilience, not only individual resilience, but resilience in a community, of which we are immensely proud.

As part of the opening celebrations, we were honoured to have Sir Eion Edgar join the Honourable Minister of Tourism Stuart Nash to officially open the trail. Sir Eion made a significant contribution to the Trust in his time, an elected board member between 2004 – 2013, chair between 2010 – 2013 and Investment Committee chair until his retirement in May 2021, one month before his passing.

A special ceremony recognising Sir Eion's contribution to the growth of the Trust, the diversification of Pioneer Energy, and his positivity toward community projects will be held at Pioneer's Roaring Meg site.

We take this opportunity to thank the board of trustees, Mark Taylor external member of our Investment Committee, and the management team for their relentless commitment and positive contribution to the Trust.

We thank the community, the good work the Trust is able to contribute towards is facilitated by our very own community members; without your drive and passion the projects we have supported this year may never have got off the ground.

As we enter our 21st year we are confident that the Trust is in a good place to continue its pivotal community role enhancing assets and enriching lives.



Central Lakes Trust board with the team at Pioneer Energy



Opening of the St John Hub, Cromwell, July 2021

Central Lakes Trust's 20th year celebration, Roxburgh Town Hall, March 2021



In the Community

20th year celebration - Roxburgh, March 2021

Central Lakes Trust celebrated its 20th anniversary and over \$100 million returned to the community with a community celebration at the Roxburgh Town Hall in March 2021. 20 years prior CLT's first grant meeting was held in Roxburgh. Our trustees were fortunate to be able to tour the Teviot Valley to see some more recent projects that have received support from the Trust.

The 20th celebration included presentations from current chair, Linda Robertson and inaugural chair, Peter Mead. The Roxburgh community and our past and present trustees celebrated the work of the Trust, and the legacy our community created 20 years ago for us all through enhancing assets and enriching lives in the Central Lakes community.

Nigel Latta Central Lakes 'Resilience' Tour, October 2020

As a Trust we were acutely aware the impacts of COVID-19 were especially tough on our region. As 2020 drew on, and we all found our new normal, events cancelled and postponed were slowly able to come back on stream and we could tentatively get back out and about. But the longer term impacts of COVID were, and still are very real, and the ability to continue to be resilient continually tested. Supporting our community in resilience building, seemed a fitting way to give back.

The booked out Nigel Latta community 'Resilience' Tour brought to the community by CLT commenced after Labour Day, with an evening in Alexandra on 27 October, then Lake Hawea on the 28th and Arrowtown on 30 October. Nigel's messages focused on our ability to recover readily from illness, depression, adversity and the like.

Feedback included:

- "Nigel's delivery of what are often serious issues is part of what sets him apart."
- "Nigel's messages about how we deal with stress and uncertainty and his strategies to cope are very practical and real – he wraps them up in a down-to-earth delivery that appeals to a wide ranging audience."
- "Nigel is an engaging speaker with excellent, timely advice, delivered in a fun, no-nonsense way."

Entry was a gold coin donation at the door, with all proceeds going to Volunteering South.

Volunteering South were at the coal face of the region's response to COVID-19, it seems only apt to return any proceeds to a group that were there for us all when we needed them most. \$2,000 was raised for the organisation, which supported them in holding events to thank their volunteers.

Getting out in the community - A & P Shows

Community engagement is important to the Trust, and as one part of this the Trust attended three local A & P shows, exhibiting our work and offering a free cold drink to all those who participated in a survey. The survey was to gather information on our communities understanding of local funders operating in our region.

We attended the Central Otago A & P Show in Omakau in February, the Mt Benger A & P Show in the Teviot Valley and the Wanaka A & P Show in March. We'll also be at Alexandra's Blossom Festival in September and the Lake Hayes A & P Show in January 2022.



Grants Manager, Mat Begg at Central Otago A & P Show, February 2021

2020 was CLT's 20th year, with over \$100 million granted back into the community, we celebrated with a community event in Roxburgh where the Trust all began with the Otago Central Electric Power Board, March 2021



CLT trustees at a recent Pioneer Energy visit



Volunteer South's Gillian White receives \$2,000 raised from Nigel Latta 'Resilience' Tour proceeds presented by CLT's CE, Susan Finlay

Nigel Latta 'Resilience' Tour, Alexandra, October 2020



Min. Stuart Nash and Sir Eion Edgar officially open the Lake Dunstan Cycle & Walking Trail at an event held at Carrick Winery, May 2021

Granting in the Community

Since inception in 2000 Central Lakes Trust has granted \$118,424,153 for charitable purpose within the Central Lakes community as at 31 March 2021.

For the financial year ended 31 March 2021 the Trust granted a total of \$9,454,900, slightly over the grants budget set for the financial year at \$9.4 million, but within the 5% contingency the Trust allows for in a year.

The \$9,454,900 grants approved for the 2020/2021 year is a less than 1% decrease on the previous financial year; the 2019/2020 year utilising almost all of the 5% contingency.

This year sees an increase in funding into the community recreation sector (from 29% to 41%), largely due to a grant of \$750,000 towards the development of the new Luggate Hall.

Community wellbeing grants see a decrease from 44% to 28%, which can be attributed to the substantial grant of \$1.65 million towards the new St John Hub in the 2019/2020 year. The recently completed hub is now fully functional and supporting our entire Central Lakes district from its base in Cromwell.

The percentage granted into other sectors remains largely consistent with the previous financial year.

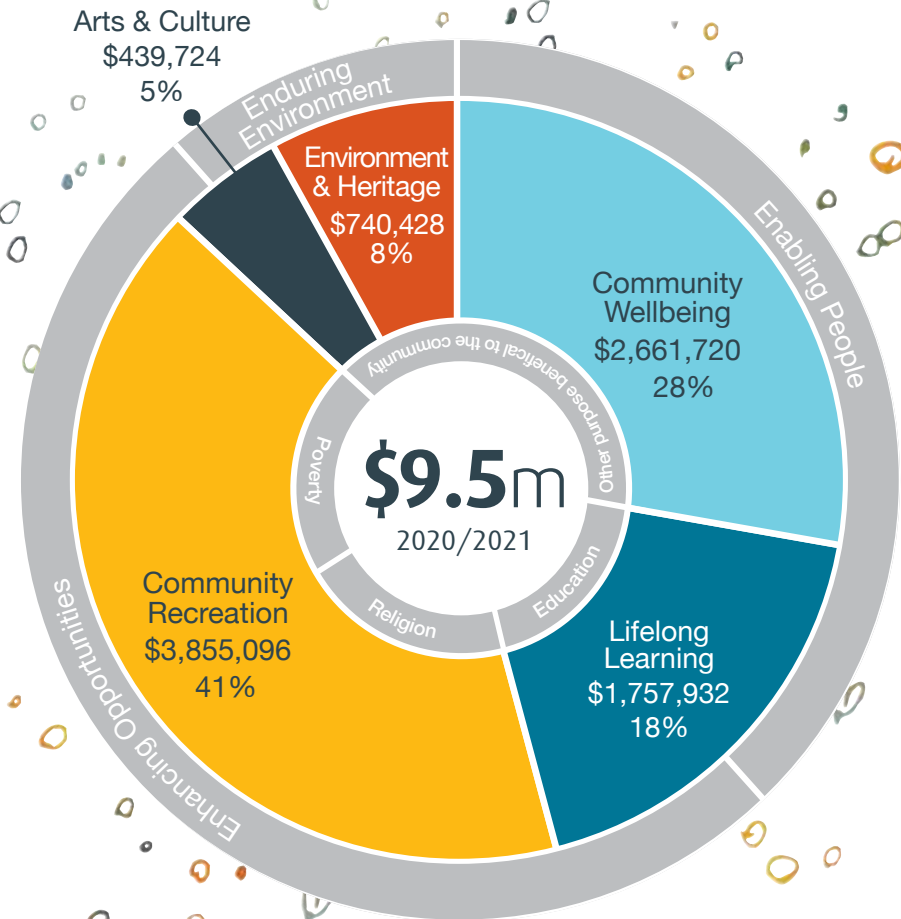
A total number of 163 grants were approved, an increase of 17 grants on last year's 146. This can be attributed to the 16 COVID-19 emergency top-up grants and the resilience in schools initiative, a total of \$503,930.

Over
\$118m

community benefit from
2000-2021, helping
thousands of people
across our region

The arts and culture sector received a slight increase in funding. While many events were adversely affected last year due to the COVID-19 pandemic, once restrictions lifted, the community was keen to join together and celebrate our ability to interact again with new arts and cultural events. In addition, while some events were cancelled or postponed, more often than not unavoidable costs had been incurred and the Trust's support remained to assist these groups.

The Trust's granting principles are "enabling people, enhancing opportunities, and enduring environment." The Trust supports the four statutory categories of charitable purpose: the relief of poverty, the advancement of education, the advancement of religion, and other purposes beneficial to the community.



Number of Grants Approved	2020/2021	2019/2020
Community Wellbeing	81	68
Lifelong Learning	35	38
Community Recreation	22	15
Arts & Culture	16	12
Environment & Heritage	9	13
	163	146



Street Smart - driver training programme at Highlands 2020



Swim schools programme 2020

Lifelong Learning

To support projects and programmes that facilitate improved learning outcomes for people in our region by adding value to the sector, with a focus on community development and lifelong learning.

Lifelong Learning

Central Lakes Trust steps up for COVID-19 resilience in schools

COVID-19 imposed constraints on us all, regardless of age. Our tamariki and rangatahi faced particular challenges.

Schools often rely on gaming machine or other community funding to supplement the costs of extracurricular activities. In the absence or reduction of that funding due to COVID-19, Central Lakes Trust created a one-off initiative to assist in the recovery and wellbeing of the young in our region.

A package was put together to ensure extracurricular activities could continue to be funded through schools. Supporting schools to deliver some form of normal, assisted in not only building their resilience but had a positive impact on families within our wider community.

\$235,000 was granted to the 27 schools within the Central Lakes region, based on their school roll.

For Clyde Primary School this funding meant a mixture of ice skating and curling in Alexandra, or a day trip to the Snow Farm. Remarkables Primary School completed a writers workshop from which they created a book 'Remarkable Stories from Remarkable Writers', artwork from this can be seen on our annual report cover.

Street Smart - Driver training programme 2020

The Trust supports the Street Smart programme within Central Lakes to give young drivers improved decision making and driving skills to avoid crashes or minimise injury.

Fatal crashes, where the driver's contribution is significant, are two to three times more likely to involve 15-24 year old drivers, than drivers 25 years and older. Rates of youth vehicle accident fatalities in New

Zealand are one of the highest in the OECD. As at 7 December 2020, overall road deaths in New Zealand had declined by 7% compared to 2019, however in the Otago region they had increased over the same period by 30%.

While the programme focuses on young drivers, parents and caregivers also attend the programme, the aim is to benefit drivers of all ages in the region. It offers hands-on practical road safety and awareness exercises not included within driver licensing testing, and not always possible to achieve in traditional driving lessons.

The Street Smart programme was held at Highlands Motorsport Park in July, October and December delivering a world-class, cognitive based driver programme to 90 young drivers and their parent/caregivers and has positively influenced the lives of young Central Lakes people on our roads.

Youth Employment Programme benefits at risk youth

The Youth Employment Project commenced in 2018 almost solely funded by CLT. The programme's aim is to develop a coordinated learning pathway to ensure continued engagement of secondary school students in education and/or training and employment.

The success of the programme over the past three years sees its expansion into Wakatipu High School and Mt Aspiring College this year. This was a CLT initiative driven primarily with funding from the Trust originally, but with its success more funders have come on board, including the Otago Polytechnic Trades Academy. We are really proud of how well the programme has done and even more proud of the students that have made it a success. Forty-three students have been assisted thus far into a range of fields from shearing, building, mechanics, roofing, hospitality, hairdressing, brick laying, earthworks, farming, early childhood, viticulture, engineering, IT and plumbing.

\$235,000
granted to
27 schools

New Zealand Centre for Gifted Education - MindPlus Wakatipu 2020

New Zealand Centre for Gifted Education provides the MindPlus programme for gifted children in the Wakatipu and wider Central Otago region. The Trust provides support through operational funding towards running the programme. There are 13 MindPlus units operating nationwide. MindPlus Wakatipu provides classes three days per week with different children attending each day. Children from Year 1-8 identified as being suitable for the specialist programme enjoyed the challenges and stimulation of like-minds together and a rigorous curriculum delivered by specialist educators. No other programme like this operates in Wakatipu. During the months affected by COVID-19, the programme was adapted to be delivered online, which worked well over the period, however they have enjoyed returning to the classroom.

"Our deepest appreciation for your assistance with ongoing attendance in the Wakatipu MindPlus programme. We have had a difficult time as a family with loss of income due to COVID-19 and your support has been tremendously helpful.... It would have been a real shame if we had to discontinue MindPlus due to finances, and you've made it possible to relax and give the children a sense of continuity and normalcy." - MindPlus Wakatipu parent

Kahu Youth Trust expands to Hawea to meet demand

This year we look at the work Kahu Youth Trust are doing in the Upper Clutha community. Kahu Youth Trust is one of four youth trusts in the CLT region, all of which have been around for over 15 years. CLT supports youth to connect with the wider community, build life skills, increase self-esteem and grow in confidence. The Trust has supported the youth trusts with operational expenses for many years.

Kahu Youth runs a range of programmes for youth, including after school groups and activities, specialised events, holiday programmes, and one-on-one sessions.

They worked hard to adapt their planned programmes accordingly through lockdown levels. So while a lot of the schools interaction could no longer happen, they provided substantial one-on-one support, and through lockdown held drop-in sessions daily via Zoom.

2021 sees Kahu Youth expanding from their Wanaka base at the 'Crib' into the Hawea township, as there has been significant growth in the community and many young families are now living there.



Central Lakes Trust scholarship recipients, Oct 2020



Kahu Youth Trust



Clyde Primary School students at the Snow Farm as part of the CLT initiative - COVID-19 resilience in schools



Boys Brigade - ICONZ Edge trailer

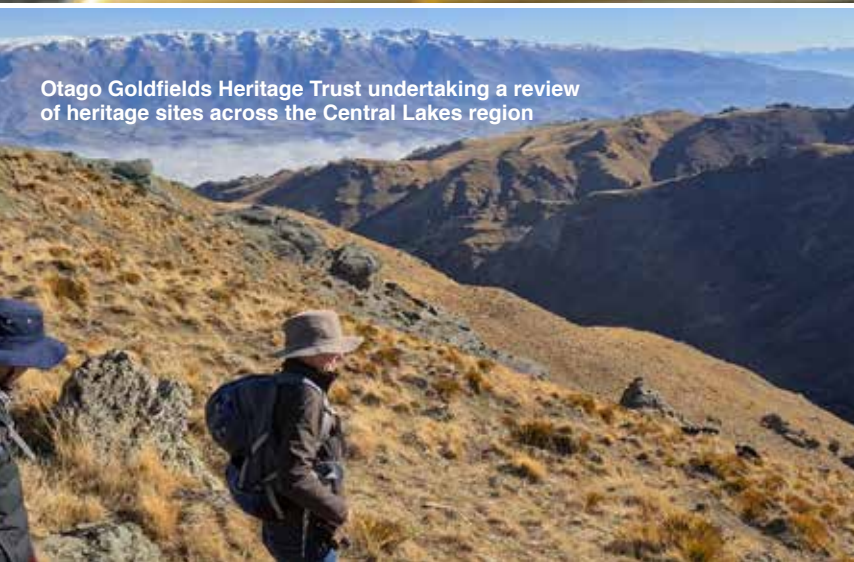
Lifelong Learning



Tarras Primary School - multi-turf

Dear donor
MindPlus is
helping my
brain grow!
Love

MindPlus Wakatipu student 2020



Otago Goldfields Heritage Trust undertaking a review of heritage sites across the Central Lakes region

Environment & Heritage

To support projects and organisations that preserve and promote the physical and cultural heritage of our region and that protect and enhance the environment in which we live.

Environment & Heritage

Wheels at Wanaka 2021 more than doubles

Wheels at Wanaka is an event held alternate years at Easter with Warbirds over Wanaka. The 2021 event was the second ever held, with visitor numbers more than doubling to 25,000 over three days versus 12,000 over two days at the first event in 2019, with many people keen to experience the region's rich transport, farming and construction heritage.

This all-vehicle, history-in-motion show is unique in New Zealand and is gaining international interest. Close to 1,800 various wheels and machines were on show, in motion!

It combined individual vehicle shows including a vintage / heritage fair, steam and stationary engines, tractors and farming heritage, plus cars, motorcycles and trucks - vintage, classics and exotics, earthmovers and heavy machinery. The aim is to educate past and future generations about New Zealand's rich transport, farming and construction heritage.

They have had amazing feedback that grandparents could show their grandkids how things were back in their day, feel and smell the types of machines that made New Zealand and Central Otago such an amazing place.

District Museum restoration project

The Lakes District Museum in Arrowtown has been operating for 72 years and is one of the cultural gems of the Queenstown Lakes community. It was established as a 'Centennial of Otago' project in 1948 and operates as the regional museum for the Lakes District. The museum occupies buildings in Buckingham Street in Arrowtown and includes the Historic Places category two building which was the former BNZ building. This

was constructed in 1875 and was designed by the noted Dunedin architect R.A. Lawson.

The museum is a central point in Arrowtown, an information centre and one of the town's biggest attractions. It also acts as a community hub, offering its boardroom as meeting space for local charities and groups such as Arrowtown Scouts and the Autumn Festival committee.

Artists use the display area to showcase their works and it has been used for social gatherings. In addition to this, the museum operates the historic Arrowtown Post Office for locals and visitors.

Well before the COVID-19 lockdown the museum's former Bank of New Zealand building, built in 1865, was marked as earthquake-prone and required strengthening by 2025. A failure to meet the deadline would likely have resulted in the museum's closure.



Along with the strengthening work, focused on the former Bank of New Zealand building and stables which houses the museum, the building is being restored, and museum displays upgraded.

The \$3.5 million project, funded through Queenstown Lakes District Council's annual plan (\$1.04 million), \$2 million from the government's provincial growth fund, and a \$426,000 grant from Central Lakes Trust to upgrade the internal displays, commenced in October 2020, and is progressing well, it is scheduled to be completed by March 2022.

WAI Wānaka safeguarding Upper Clutha waterways

WAI Wānaka is the new name for the Upper Clutha Lakes Trust. WAI stands for Water Action Initiative. WAI Wānaka is an organisation where people who want to safeguard the health of our alpine waterways build communities that do.

WAI Wānaka coordinates the activities and needs of a diverse group representing the various segments of the community in the Upper Clutha water catchment area and beyond.

The group believes the iconic waterways of the Upper Clutha region are the community's essential infrastructure, and that our community has a responsibility to safeguard the water and ensure water leaving the catchment is of high quality to avoid problems downstream.

WAI Wānaka believes that science lies at the heart of understanding how we balance the needs of our community alongside maintaining the health of our environment, and advocates for the active management of waterways supported by evidence-based decision making.

Changing land use, population and tourism growth, invasive pests, climate change and loss of biodiversity are all bringing significant risk to freshwater. The group released Our Freshwater 2020, which paints a dismal picture of the current state of rivers and lakes in New Zealand. WAI Wānaka's work in the community has led to the development of a Community Catchment Plan which identified 60 actions addressing current and future risks to freshwater resources, to prevent decline in water quality and ecosystem function.

CLT provide operational support for this activator / navigator role to represent the wellbeing of the Upper Clutha lakes and waterways. The role coordinates the efforts and plans of well over 30 significant groups of local, regional and national stakeholders.



Paradise Trust's barn restoration



CLT chair, Linda Robertson with Lakes District Museum director David Clarke reviewing the earthquake strengthening and restoration project currently underway



Millers Flat Bakehouse storeroom/ kitchen authentication



Wheels at Wanaka, Easter 2021



WAI Wānaka's education and outreach co-ordinator Jose, getting local school children interested in macroinvertebrates at the 'Our Place' stand at the Wanaka A&P Show

Environment & Heritage

Central Otago Journeys programme participants (clockwise L to R) Rosheen Moss, Ruby Flannery, Grace Begg and Isla Nelson



Queenstown community palliative nurse Jill Brown with Hospice Southland's 4WD vehicle for Queenstown



Community Wellbeing

To support and strengthen community organisations, which address social problems or improve health outcomes for the people in our region.

Community Wellbeing

Ronald McDonald House South Island - 2020

CLT supports families from our CLT region to stay at Ronald McDonald House in Christchurch and Ronald McDonald Family Room in Invercargill. 438 bed nights were utilised by Central Lakes residents throughout 2020.

Queenstown's Muireann Preston knows just how valuable it is to stay at the Ronald McDonald Family Room after spending time there before the birth of her twin girls in spring 2020.

"Being my first babies, I was particularly nervous and anxious about being on my own. Being able to stay at the Ronald McDonald Family Room was a game changer. Not only was I closer to the Neonatal Unit should I go into labour, but to see Helen the Family Room Supervisor every day and have a familiar and friendly face around me was priceless."

"At 36 weeks pregnant I went into labour and I truly believe being able to stay at the Ronald McDonald Family Room helped to keep me calm and less anxious. We didn't need the Neonatal Unit in the end, and it was thanks to the Family Room that had a positive impact on my mental well-being, it definitely helped to keep the babies in for longer!"

"I don't think people will have any idea how incredible or valuable the facility is until you need to use it."

Southern Wellbeing Trust - GoodYarn community programme pilot

Queenstown based, Southern Wellbeing Trust was set up in September 2020 to address mental health concerns in our community due to COVID-19.

The Southern Wellbeing Trust's first priority is to raise mental health literacy, particularly among the communities who have been hardest hit in the last 12 months.

The pilot programme is based around the GoodYarn mental health education workshop which helps people to talk openly about mental health and wellbeing, learn how to recognise common signs and symptoms of mental illness, and support those experiencing mental distress to access help.

The GoodYarn model is different to other mental health programmes in that it trains non-clinical people to deliver the programme to their colleagues or peers. This means that the knowledge and support offered is more easily accessible to the audience and stays in the community in which it is delivered.

The first community workshop was delivered in May 2021, since then a further five workshops have been held, three for the Filipino community, one for the Brazilian community, a new parent workshop, as well as two stakeholder workshops.

\$2.66mil
granted to
Wellbeing

Supporting our communities to be better equipped to navigate the challenges of the post COVID landscape, has been a focus for Central Lakes Trust over the past year, this new pilot programme is achieving real results.

COVID-19 Emergency grants for social services

Requirements for services such as budgeting support, senior citizens groups, meals on wheels, crisis and long term counselling saw increased demand due to the effects of COVID-19.

Central Lakes Trust is one of the few funders to provide funding to social services and has a long history of doing so.

Recognising the additional demand, the Trust granted 16 social service agencies one-off top up grants to assist the communities response to COVID.

Among them was Central Lakes Family Services.

Centre Manager, Tina Mongston says, *"We have experienced an increased need for mild to moderate mental health support for families and individuals and alongside this, we are also seeing more mental health and alcohol related issues presenting with our family violence referrals. COVID-19 has placed a great deal of pressure on families and we have prepared the service for the recovery process acknowledging that it will be long. CLT has supported us since 2002 and we are extremely grateful for the consistent ongoing support they have provided over the years. The continued need for our services has become more evident over the years, but under the current environment there is a high demand for support in our community."*

The service operates across Queenstown, Alexandra, Wanaka and Cromwell, amongst the worst hit and most challenged regions in New Zealand.

**16 one-off
COVID-19
grants**

Multi-year grants offer grantees security

For groups the Trust have supported for some time CLT provide multi-year grants so they have some certainty for the future, in what has been an uncertain time.

Happiness House, who provide practical support and advocacy, agency referrals, access to affordable clothing and bedding and more recently counselling for families and individuals in the Wakatipu area, have also seen an increase in demand this past year.

Happiness House Manager, Robyn Francis says, *"We anticipated a reduction in community donations as the harsh realities of the economic downturn set in. We could not be more grateful for the support of CLT, it is very reassuring to know that we have a solid foundation of funding towards our costs over the coming year."*



Baskets of Blessing preparing meals 2020



Southern Wellbeing Trust's first community workshop for the Filipino community - May 2021



Cromwell Lions - new community van

Twins Ava and Maisy at Ronald McDonald Family Room, Southland Hospital



Central Otago Riding for the Disabled

Community Wellbeing



Wakatipu Music Festival, June 2021



Three Lakes Cultural Trust's
renew arts project

Arts & Culture

To support creative projects and organisations that aim to foster access to, engagement with, and experience in the arts and celebrate the different cultures in our region.

Arts & Culture

Wakatipu Music Festival celebrates NZ talent when international event cancelled, June 2021

As a temporary alternative to the Michael Hill International Violin Competition, the Wakatipu Music Festival was conceived to be a classical music festival bringing together New Zealand's outstanding emerging artists and leading professional musicians, together with local performers, expert speakers, grassroots music initiatives and dedicated local and national educators. It was devised to partially fill the void of opportunity and activity in the region caused by the cancellation of the international event.

Over four days, 33 performances were held by local and New Zealand's top classical musicians including concerts, public talks and workshops. 148 musicians participated, 1,500 people attended with 33,500 livestream views.

It included 13 of New Zealand's most talented and promising musicians, who, were it not for COVID-19, would normally be offshore representing New Zealand in competitions and major events, but instead were auditioned and selected to participate in the festival's Young Artist Programme – receiving coaching, essential career development, and performance opportunities. These inspiring musicians are on their way to becoming our musical stars and will be the pride of New Zealand.

The festival also included eight free community music workshops addressing teacher training and general interest, as well as four school visits.

"Please do this training ground programme again, it really does so much for the community and can change lives!" - A training ground apprentice.

LUMA back at the Queenstown Botanical Gardens, June 2021

The 2020 event was cancelled due to COVID-19, as were many events throughout our district. Putting together events incurs costs whether they proceed or not. CLT made the decision to continue to support events we had granted even if cancelled, as was the case for LUMA 2020. Since its inception in 2015 the LUMA Southern Light Project has developed into a year-round programme engaging with schools, artists, local business, local community and regional groups which culminates in an annual four day event, showcasing performance, sculpture and artistic installations. The number of attendees has increased from 1,500 at the inaugural event to 55,000 at the 2019 event, and 50,000 in 2021.

Community hungers for arts after COVID-19 cancelled many events

Legally Blonde - The Musical entertains the Wakatipu, May 2021

Often the Trust will support community charitable events with a 'guarantee against loss' so that should the worst happen, the event can cover costs. Well, COVID-19 postponed Showbiz Queenstown's 2020 event and to provide some certainty for the 2021 version of the musical, the Trust provided a mixture of both a guarantee against loss and a grant.

Legally Blonde – The Musical was planned to run in Queenstown in May 2020. Planning and expenditure was in an advanced stage when the pandemic struck forcing the show to postpone a year. Fortunately the majority of the cast, crew and creative team were still available 12 months on.

It proved to be Showbiz Queenstown's most successful show ever in 45 years of staging musical theatre productions. Over nine nights, occupancy was over 95% with close to 4,000 people enjoying the show. Comments such as *"The best show I have ever seen..."* and *"This show way exceeded my expectations..."* were regularly heard at the end of each night.

"The Central Lakes Trust has for many years, generously supported our society by way of a 'guarantee against loss' and while we have not often had to use it, it is always comforting to know that we have a backstop in place should we need it."
– Peter Waaka, Showbiz Queenstown

Festival of Colour 2021 profiles Kiwi talent, April 2021

Known as 'the best little arts festival in New Zealand', the ninth Festival of Colour brought heart, soul and creative joy to Wanaka and the surrounding area.

Bringing the community together, the festival attracted new audiences, featured a world-class programme of performers from around Aotearoa, and the largest community and educational programmes yet. COVID-19 meant the festival celebrated the huge range of talent right here in New Zealand, including three world premieres.

It opened with a free outdoor concert including a live performance of Te Taki o te Ua / The Sound of Rain. The work, on display throughout the festival, weaved together contemporary dance, waiata, taonga pūoro, animation, video and soundscape.

The schools and educational programme gave 2,340 primary and high school students (up from 1,690 in 2019), as well as other community members, the chance to work with the kind of top professionals they would not normally have access to in a rural environment.

This included the Royal NZ Ballet Dance Educator working with dancers all week. She worked with 640 locals, including young dancers at several primary schools and dance schools, elderly residents at both Emslie House and Aspiring Retirement Village, and a differently-abled group who took part in an adaptive dance workshop through Mint Trust.

After a tough 2020, the festival fulfilled a hunger for arts events in our region, and brought thousands of people into the Wanaka CBD, giving local businesses a much-needed boost.

The events profiled above were grants approved in the 2020/21 financial year



Roxburgh Entertainment Centre - sound system



Fungi, LUMA 2021
Photo credit: Aiste Photography



Festival of Colour 2021 - Cross the Line

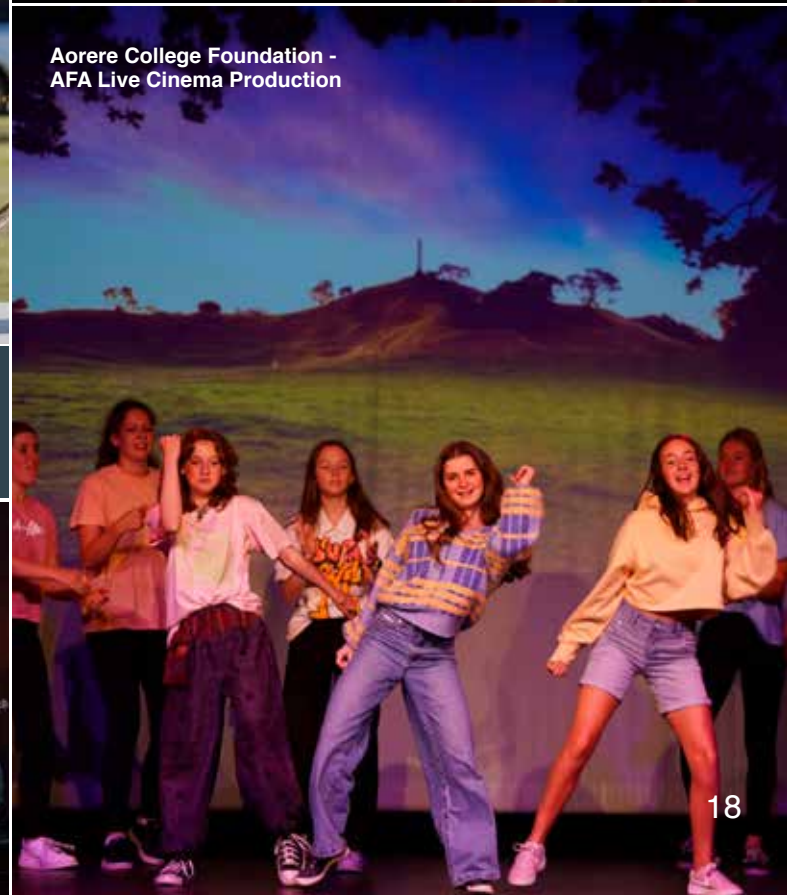
Arts & Culture



Yami Sounz Summit, May 2021



Arts on Tour -
Aperture The Life and Works of Ans Westra



Aorere College Foundation -
AFA Live Cinema Production



Snow Sports NZ's Adaptive ski programme 2020

Children at the Lake Hayes A&P Show, Jan 2021



Community Recreation

To support organisations that focus on community participation and engagement in recreation. Targeted support will be provided for those organisations that are aiming to increase participation of people of all ages.

Community Recreation

NZ's first 'passive' community facility

The Luggate Community Hall was decommissioned in 2017 due to seismic concerns, leaving Luggate without any form of community facility.

An extensive process of community consultation was conducted to determine the demand and scope of facilities required for the community's immediate and future needs and a passive building design was chosen in 2020.

Construction of the new and innovative Memorial Centre for Luggate commenced in July 2021, targeting a completion date of April 2022. The Luggate Memorial Hall will be Aotearoa New Zealand's first community facility built to the Passive House standard – a very exciting development!

The old hall has recently been demolished salvaging reusable materials and the site prepared with initial earthworks complete and underground services in.

The new building has been carefully designed to cater for a wide range of community uses and with an eye to the future. The goal is to return a permanent focal point for the Luggate community, a place to bring people together locally but also an attractive venue for events that can be enjoyed by people across the district.

Trust chief executive, Susan Finlay says, *"While it may have been a lengthy process, it's rewarding to see a well thought out concept. The hall will end up requiring very little energy to operate, reducing running costs, and ultimately offer a healthy and comfortable centre for the Luggate community to once again gather together."*



Queenstown Trails Trust's trail extension to proceed

Queenstown Trail Trust's 17.6km extension from Arrowtown to Tucker Beach via Arthurs Point will commence this summer. This new trail will offer access to previously inaccessible parts of the Wakatipu Basin – the stunning Shotover Gorge – running along the true left of the Shotover River/ Kimi-ākau River to a new pedestrian bridge at Tucker Beach.

The Trail will also provide an off-road link from Arrowtown along Malaghans Road, from where it will enable easy access up onto Coronet Peak trails, on to Littles Road and through the gorge to Tucker Beach.

More than three years in the planning, a huge amount of work has gone into this new trail, which is expected to be very popular.

Lake Dunstan Trail - the jewel in the crown of the cycle trail network in Central Otago

The culmination of the Trust's year was in the opening of the Lake Dunstan Cycle and Walking Trail. An official opening function was held on 7 May 2021 at which the late Sir Eion Edgar and Honourable Minister of Tourism Stuart Nash opened the trail.

The following day a ribbon cutting was held in Clyde with first riders cycling the trail to Cromwell's Heritage Precinct for a grand opening celebration. To date 25,000 have utilised the trail.

The Lake Dunstan Trail project has been driven by the Central Otago Queenstown Trail Network Trust (COQTNT) and is the first of five projects COQTNT is focused on.

COQTNT was successful in securing funding from central government, with then Prime Minister John Key announcing a contribution of \$13.15 million at a function at Carrick Winery in May 2016. It signalled central government's tripartite funding agreement with Central Lakes Trust and the Otago Community Trust, matching the government's support with \$11.15 million from Central Lakes Trust and \$2 million from Otago Community Trust.

Feasibility studies for the Lake Dunstan Trail date back to 2014.

Construction commenced on the first part of the trail on 31 May 2019, with the portion along Lake Dunstan beyond Pisa Moorings opening for the summer of 2019.

Linking trails from Clyde to Cromwell, the 59 kilometre trail passes New Zealand's third largest hydroelectric dam - the Clyde Dam - then travels along the Cromwell Gorge towards picturesque Cornish Point and links in the nearby renowned wine growing area of Bannockburn. It continues along Lake Dunstan, through Cromwell towards an area just north of Pisa Moorings, towards Wanaka.

The Lake Dunstan Trail extends, and complements, the well-established Great Rides of the Otago Central Rail Trail and the newer Roxburgh Gorge Trail, both of which are part of Ngā Haerenga - The New Zealand Cycle Trail.

The grant to link the Great Rides of New Zealand in our region still remains today CLT's largest grant at \$11.15 million, and shows the tremendous foresight of the then trustees, to which we would particularly acknowledge the late Sir Eion Edgar's invaluable contribution. A legacy asset for the community.



CLT trustees and staff at the recently opened IcelnLine curling facility, Alexandra



Snow Sports NZ's Adaptive ski programme 2020



CLT trustees, Kathy Dedo (L) and Rosie Hill (R) at Challenge Wanaka, with commercial manager Amy Carroll, Feb 2021



Junior Challenge Wanaka, Feb 2021

Community Recreation



Lake Dunstan Cycle & Walking Trail opening, May 2021



New Luggate community centre

Quick Facts

- ♥ The board formally met 11 times during the financial year.
- ♥ Trustees also attend community functions to represent the Trust.
- ♥ The Trust has two committees, the Investment Committee and Remuneration and Nomination Committee.
- ♥ The Investment Committee comprised two external members being the late Sir Eion Edgar (chair) and Mark Taylor, trustees Linda Robertson and Lindsay Breen, along with CE Susan Finlay.
- ♥ The Remuneration and Nomination Committee comprises Hetty Van Hale (chair), Linda Robertson and Tony Lepper.
- ♥ Trustees receive a fee of \$18,000 per annum for their service with additional fees paid for committee roles and/or holding a position of chair.
- ♥ Trustees are indemnified through the Trust Deed and the Trust procures directors and officers liability insurance cover.

Linda Robertson Chair
APPOINTED TRUSTEE
(2017 - 2023)



Hetty Van Hale
Deputy Chair
APPOINTED TRUSTEE
(2018 - 2021)



Kathy Grant
APPOINTED TRUSTEE
(2020 - 2023)



Tony Lepper
ONZM
ELECTED TRUSTEE
(2019 - 2022)



The Board of Central Lakes Trust

Representing our community are our elected and appointed trustees who serve on the Board of Central Lakes Trust.



Cath Gilmour
ELECTED TRUSTEE
(2013 - 2022)



Kathy Dedo
ELECTED TRUSTEE
(2019 - 2022)



Lindsay Breen
ELECTED TRUSTEE
(2019 - 2022)



Rosie Hill
ELECTED TRUSTEE
(2019 - 2022)

Our Staff



Mat Begg
GRANTS
MANAGER

Sandra Hewerdine
BUSINESS
SERVICES
MANAGER

Jennifer Gillan
GRANTS
ADMINISTRATOR

Susan Finlay
CHIEF
EXECUTIVE

Carryn Colton
COMMUNICATION
& MARKETING
CO-ORDINATOR

Anna Doyle
FINANCIAL
CONTROLLER

Martin Smith
GRANTS
ADVISOR

Jenn McGregor
BUSINESS
SERVICES
ADMINISTRATOR

Our Values

Be Prudent

Acting with wisdom and care to enhance the social and financial value of the Trust



Be Collaborative

Working with others to identify priorities, improve performance and achieve great outcomes



Be Open

Being transparent, approachable and collaborative



Be Proactive

Making things happen by identifying needs and opportunities and, when necessary, initiating change



Have Integrity

Doing things well through good judgement, sound ethics, professionalism and consistency



Be Fair

Being impartial

Investment Snapshot 2020/2021

CENTRAL LAKES TRUST – PARENT ENTITY ONLY

Investment Return

Our diversified investment portfolio has recorded significant returns this financial year reflecting the strength in economies globally.

17%
IN 2020-2021

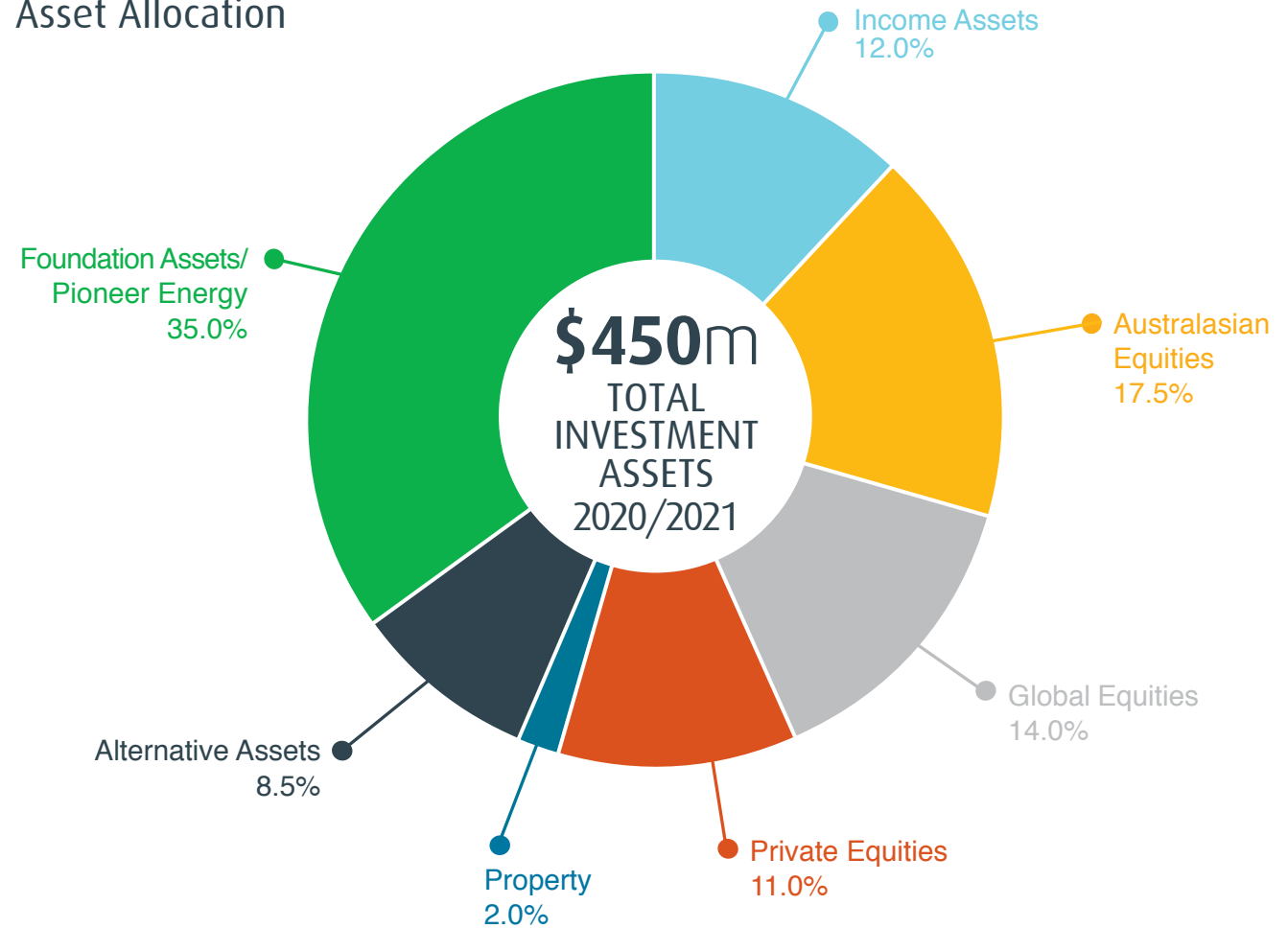


1.0%
IN 2019-2020



Our investment returns to 31 March 2020 included the unprecedented March 2020 market correction in response to the COVID-19 pandemic.

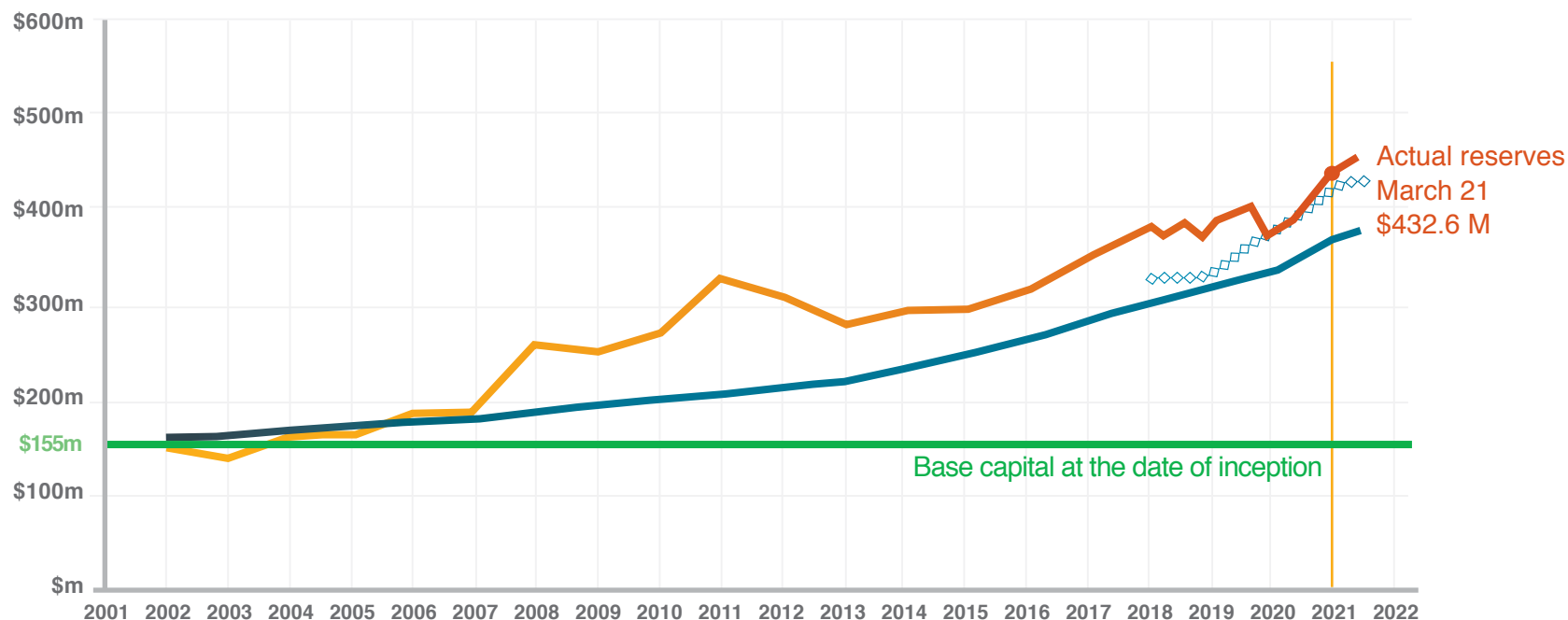
Asset Allocation



Trustees acknowledge the ongoing market uncertainty; however we continue to adopt prudent investment management which includes the principles of socially responsible and ethical investing, with the assistance of both our independent investment advisors and our Investment Committee.

Reserving Position

The hard benchmark has increased in the 2021 year to reflect higher population growth than had previously been indicated.



Hard Benchmark

Base capital (\$155m) adjusted for CPI since inception and adjusted for population growth since April 2012. This is defined as the hard benchmark. The Trust monitors its actual reserves to ensure they remain above the hard benchmark, therefore protecting our capital for future generations.



Soft Benchmark

Since 2018 the Trust has maintained a soft benchmark above the hard benchmark, which equates to a rolling five year average of actual grants approved and operating costs. The five years of granting and operations expenditure has been formulated to allow the Trust to continue to support the community whilst still protecting our capital for future generations in times when world events such as COVID-19 effect our actual reserves.

Included within the grants approved in the 2020/2021 financial year are grants also approved for the 2021/2022 year valued at \$1,819,517, and the 2022/2023 year at \$962,257.

We refer to these as multi-year grants. Multi-year grants are approved where the Trust recognises the need for social service providers to have certainty of funding for future service provision.

Note, \$13,410 for the Teviot Valley Rest Home Incorporated CLT Rest homes aquaria has been recognised in a previous financial year.



The summary financial statements are presented for Central Lakes Trust Group fully consolidating Pioneer Energy Ltd. Central Lakes Trust, being the parent entity, recorded a surplus of \$63.7m inclusive of interest and dividends of \$10.6m received from Pioneer Energy Ltd. These are eliminated upon consolidation.

Pioneer Energy Ltd also recorded a surplus of \$57.4m for the financial year ended 31 March 2021. This surplus can be attributed to strong generation and high spot prices, along with the fair market value of derivatives at balance date.

Financial Statements

Central Lakes Trust Group SUMMARY OF FINANCIAL STATEMENTS

Summary Consolidated Statement of Comprehensive Revenue and Expenses for the year ended 31 March 2021

	Group	
	2021 \$000	2020 \$000 (Restated)
Revenue from Exchange Transactions		
Investment Gains/(Losses)	67,052	(8,982)
Generation, Retail and Energy	128,003	101,936
Other Revenue	7,313	4,055
	<u>202,368</u>	<u>97,009</u>
Less Expenses		
Cost of Sales-Electricity	92,896	74,510
Depreciation & Amortisation Expense	6,551	7,217
Finance Costs	6,221	5,268
Operating Items	22,654	18,232
	<u>128,312</u>	<u>105,227</u>
Net Operating Surplus/(Deficit)	74,056	(8,218)
Less Grants Approved	(12,223)	(9,544)
Add Grants Rescinded	110	421
	<u>61,943</u>	<u>(17,341)</u>
Gains/(losses) on Derivatives	(26,679)	4,017
Share of Surplus / (Deficit) from Joint Ventures	81,218	(13,849)
Net Surplus (Deficit) for the year	116,482	(27,173)
Other Comprehensive Revenue or Expense		
<i>Item that may be reclassified subsequently to surplus or deficit</i>		
<i>Cash Flow Hedges</i>		
Fair Value gain/(loss) on Interest Rate Swaps	3,973	(2,436)
Fair Value gain/(loss) on Foreign Exchange Contracts	(7)	33
Other Comprehensive Revenue or Expense for the year	<u>3,966</u>	<u>(2,403)</u>
Total Comprehensive Revenue and Expense for the year	120,448	(29,576)
Net Surplus (Deficit) for the year attributable to:		
Trust	116,482	(27,002)
Minority interests	-	(171)
	<u>116,482</u>	<u>(27,173)</u>
Total Comprehensive Revenue and Expense for the year attributable to:		
Trust	120,448	(29,405)
Minority interests	-	(171)
	<u>120,448</u>	<u>(29,576)</u>

Trustee

Trustee

These Summary Financial Statements should be read in conjunction with the full financial statements, which are available at www.cltr.net.nz

1



Financial Statements

Central Lakes Trust Group SUMMARY OF FINANCIAL STATEMENTS

Summary Consolidated Statement of Changes in Net Assets/Equity for the year ended 31 March 2021

	General Funds	Capital Maintenance Reserve	Population Growth Reserve	Minority interests	Hedging Reserve	Total
Group	\$000	\$000	\$000	\$000	\$000	\$000
Balance at 1 April 2019 (restated)	219,185	77,147	61,270	409	(5,416)	352,595
Total Comprehensive Revenue & Expense for the year (restated)	(27,002)	-	-	(171)	(2,403)	(29,576)
Transfer from General Funds	(44,765)	5,059	39,706	-	-	-
Balance at 31 March 2020 (restated)	147,418	82,206	100,976	238	(7,819)	323,019
Total Comprehensive Revenue & Expense for the year	116,482	-	-	-	3,966	120,448
Transfer from General Funds	(35,381)	2,706	32,675	-	-	-
Disposal of Subsidiary	238	-	-	(238)	-	-
Balance at 31 March 2021	228,757	84,912	133,651	-	(3,853)	443,467

These Summary Financial Statements should be read in conjunction with the full financial statements, which are available at www.clt.net.nz

- 2 -

Central Lakes Trust Group SUMMARY OF FINANCIAL STATEMENTS

Summary Consolidated Statement of Financial Position as at 31 March 2021

	Group	
	2021	2020
	\$000	\$000
		(Restated)
Assets		
Non Current:		
Investments	427,500	288,371
Investment Property	4,800	4,325
Property, Plant & Equipment	74,325	85,916
Intangibles	17,093	17,561
Derivative Financial Assets	18,523	23,014
Current	115,897	51,336
	658,138	470,523
Liabilities		
Non-current	128,838	116,414
Current	85,833	31,090
	214,671	147,504
Net Assets	443,467	323,019
Represented by:		
Trust Capital & Reserves - attributable to the Trust	443,467	322,781
Trust Capital & Reserves - attributable to the Minority Interests	-	238
Closing Equity	443,467	323,019

Summary Consolidated Cash Flow Statement For the year ended 31 March 2021

	Group	
	2021	2020
	\$000	\$000
Opening Cash	1,892	292
Net Cashflows from Operating Activities	5,750	1,655
Net Cashflows from Investing Activities	7,350	(6,408)
Net Cashflows from Financing Activities	1,119	6,353
	14,219	1,600
Closing Cash	16,111	1,892

Explanatory Note

The summary financial information has been derived from, and should be read in conjunction with, the Central Lakes Trust Group annual financial statements (the 'full financial statements'). The full financial statements were authorised for issue by the Trustees on 30 August 2021 and are available at www.clt.net.nz or a copy can be requested by contacting the Trust on 0800 00 11 37. The accounting policies used in these financial statements are included in the notes to the full financial statements. The full financial statements comply with Not For Profit Public Benefit Entity Accounting Standards (PBE Standards (NFP)) and have been prepared in accordance with Tier 1 PBE Standards (NFP). The full financial statements have been audited by Deloitte Limited and an unqualified opinion given. The summary financial information cannot be expected to provide as complete an understanding as provided by the full financial statements.

These Summary Financial Statements should be read in conjunction with the full financial statements, which are available at www.clt.net.nz

- 3 -

Grants Approved April 2020 – March 2021

LIFELONG LEARNING

Alexandra and Districts Youth Trust	Operational Grant Jan 2021 - Dec 2023	\$129,528
Blue Light Central Lakes	BLAST 2021	\$1,370
Central Otago REAP	Operational Grant Jan 2021 - Dec 2021	\$98,000
CLT Scholarships 2020 for 2021	CLT Tertiary Scholarships Programme 2020 for 2021	\$125,000
CLT Schools Emergency Fund - COVID 19	CLT Schools Emergency Fund COVID-19 2020	\$235,000
Clyde Playcentre	Whare Playhouse	\$1,650
Cromwell College	Central Otago Principals Association (COPA) Referral Programme Jan 2020 – Dec 2022	\$14,915
Cromwell Early Learning Centre	Brick Wall Replacement	\$9,500
Cromwell Primary School	Playground Development	\$43,837
Cromwell Youth Trust	Operational Grant Jan 2021 - Dec 2021	\$120,222
Dunstan High School	Central Otago Principals Association (COPA) Referral Programme Jan 2020 – Dec 2022	\$16,614
Graeme Dingle Foundation	STARS programme at Wakatipu High Jan 2021 - Dec 2021	\$20,000
Kahu Youth	Operational Grant Jan 2021 - Dec 2023	\$201,000
Life Education Trust	Programme Grant Jan 2021 - Dec 2023	\$30,000
Millers Flat School	Resurfacing School Tennis/Netball Courts	\$10,000
Mount Aspiring College	Central Otago Principals Association (COPA) Referral Programme Jan 2020 – Dec 2022	\$31,811
New Zealand Centre for Gifted Education	Programme Grant Jan 2021 - Dec 2021	\$20,000
Parenting Place	Parenting Programme Grant Apr 2020 - Mar 2021	\$4,000
Queenstown Primary School	Installation of Spider Frame	\$15,000
Road Safety Education Limited	Young Driver Education Programme 2021	\$4,540
Roxburgh Area School	Central Otago Principals Association (COPA) Referral Programme Jan 2020 – Dec 2022	\$2,737
Southern REAP	Drive My Life Programme Jan 2021 - Dec 2021	\$34,600
Sport Otago	Swim Safe Programme Jan 2020 - Dec 2022	\$139,040
Sticks 'n Stones	Programme Grant Jan 2021 - Dec 2021	\$106,478
St Josephs School	Sandpit Upgrade	\$6,925
Street Smart	Driver Training Apr 2021 - Mar 2022	\$12,000
Street Smart	Driver Training Jun 2020 - Mar 2021	\$9,900
Tarras School	Multi Sport Court Resurface	\$10,000
The Boys Brigade in New Zealand Incorporated	Programme Grant Jan 2021 - Dec 2021	\$27,000
The Boys Brigade in New Zealand Incorporated	ICONZ Edge Trailer	\$2,000
Wakatipu High School	Central Otago Principals Association (COPA) Referral Programme Jan 2020 – Dec 2022	\$28,319
Wakatipu High School	Youth Employment Programme WHS and MAC 2021	\$30,000
Wakatipu Youth Trust	Operational Grant Jan 2021 - Dec 2023	\$183,600
Wanaka Preschool Early Childhood Centre Inc	Verandah Replacement and Small Roof	\$3,346
Youth Employment Project	Operational Grant Jul 2020 - Dec 2021	\$30,000

TOTAL

\$1,757,932

COMMUNITY WELLBEING

Able Charitable Trust	Operational Grant Jul 2020 - Jun 2021	\$17,000
Age Concern Otago	Operational Grant Dec 2020 - Nov 2023	\$90,000
Age Concern Otago	COVID-19 Emergency Grant	\$6,420
Age Concern Southland Incorporated	Operational Grant Jul 2020 - Jun 2021	\$50,000
Alexandra Baptist Church	West Wing Renovation	\$52,476
Alexandra Community Advice Network Inc.	Operational Grant Jul 2020 - Jun 2023	\$10,000
Alexandra Community House	COVID-19 Emergency Grant	\$14,000
Alexandra Senior Citizens Centre Inc	Operational Grant Jun 2020 - May 2021	\$12,000
Alzheimer's Society Otago	Operational Grant Apr 2020 - Mar 2023	\$20,371
Anglican Family Care Centre (Inc)	Operational Grant Jul 2019 - Jun 2022	\$20,371
Anglican Family Care Centre (Inc)	COVID-19 Emergency Grant	\$9,750
Arthritis New Zealand	Operational Grant Jul 2020 - Jun 2021	\$5,800
Baskets of Blessing	Operational Grant Nov 2020 - Jun 2022	\$78,670
Birthingright Central Otago	Welfare Programme Jul 2020 - Jun 2021	\$5,796

Birthingright Central Otago	COVID-19 Emergency Grant	\$5,000
Blind Low Vision NZ	Operational Grant Jul 2020 - Jun 2021	\$40,000
Cancer Society of NZ, Otago & Southland Division	Operational Grant Apr 2020 - Mar 2023	\$67,223
Catholic Social Services	Operational Grant Jan 2021 - Dec 2023	\$40,000
Catholic Social Services	COVID-19 Emergency Grant	\$6,500
Central Lakes Breastfeeding	Operational Grant Apr 2021 - Mar 2022	\$27,000
Central Lakes Family Services	Operational Grant Jul 2020 - Jun 2023	\$85,000
Central Lakes Family Services	COVID-19 Emergency Grant - Mental Health Navigator	\$45,000
Central Lakes Family Services	COVID-19 Emergency Grant - Social Worker in Wakatipu Primary Schools	\$25,000
Central Otago Budgeting Services	Operational Grant Jul 2020 - Jun 2021	\$65,000
Central Otago Budgeting Services	COVID-19 Emergency Grant	\$10,000
Central Otago Friendship Network	Operational Grant Apr 2021 - Mar 2022	\$28,625
Central Otago Compassionate Friends	Operational Grant Jul 2020 - Jun 2023	\$16,000
Central Otago Victim Support	Emergency Support Fund Jul 2020 - Jun 2021	\$12,000
Central Otago Victim Support	Operational Grant Jul 2020 - Jun 2021	\$10,000
Citizens Advice Bureau Queenstown	Operational Grant Jul 2020 - Jun 2021	\$45,500
Citizens Advice Bureau Queenstown	COVID-19 Emergency Grant	\$7,800
Central Otago Riding for Disabled	Operational Grant Jul 2020 - Dec 2021	\$10,800
CLT - COVID-19 Community Support Role	COVID-19 Emergency Grant - Alexandra Community House	\$59,500
CLT - COVID-19 Community Support Role	COVID-19 Emergency Grant - Community Networks Wanaka	\$37,000
Community Law Otago	Operational Grant Jul 2020 - Jun 2021	\$21,000
Community Networks Wanaka	Operational Grant Jan 2021 - Dec 2021	\$120,000
Cosy Homes Charitable Trust	Insulation Programme Nov 2018 - Jun 2023	\$200,000
Cromwell Community Welfare Trust	Operational Grant Jan 2019 - Dec 2021	\$4,670
Cromwell Lions Club	Community Van Upgrade	\$15,000
Cromwell Presbyterian Church	Light Party 2020	\$3,263
Cromwell Resource Centre Trust	Operational Grant Apr 2020 - Mar 2023	\$39,723
Cromwell Resource Centre Trust	COVID-19 Emergency Grant	\$9,324
Cystic Fibrosis NZ	Operational Grant Fieldworker Jul 2020 - Jun 2021	\$6,000
Disability Information Service	Mobile Service Apr 2021 - Mar 2022	\$12,010
DRC Southland	Operational Grant Jul 2020 - Jun 2021	\$10,000
Epilepsy Association of New Zealand Incorporated	Operational Grant Apr 2021 - Mar 2022	\$5,000
Happiness House Trust	Operational Grant Jul 2020 - Jun 2023	\$55,052
Hospice Southland	4WD Vehicle - Queenstown	\$13,175
Journeys Charitable Trust	Journeys Programme Oct 2020 - Dec 2021	\$25,145
Kelvin Peninsula Community Association Incorporated	Emergency Response Equipment	\$5,000
Lakes District Air Rescue Trust	Air Rescue Training Programme Apr 2021 - Mar 2022	\$200,000
Lakes District Hospital Foundation	Whanau Room	\$48,594
NZ Mountain Film Festival Charitable Trust	NZ Mountain Film & Book Festival 2020	\$3,000
Omakau Volunteer Fire Brigade	First Response Unit	\$1,390
Otago Community Hospice Trust	Operational Grant Jul 2019 - Jun 2022	\$70,912
Otago Multiple Sclerosis Society Inc	Operational Grant Jan 2021 - Dec 2021	\$7,281
Parkinson's New Zealand	Operational Grant Jul 2020 - Jun 2021	\$10,000
Presbyterian Support Otago	Operational Grant Jul 2019 - Jun 2022	\$66,205
Presbyterian Support Otago	COVID-19 Emergency Heating Fund Top-up	\$8,000
Presbyterian Support Otago	Emergency Heating Fund Jul 2020 - Jun 2021	\$20,000
Presbyterian Support Otago	COVID-19 Emergency Grant	\$5,000
Presbyterian Support Southland	Operational Grant Jul 2020 - Jun 2021	\$50,000
Prime Timers	Operational Grant Jun 2020 - May 2021	\$10,000
Queenstown Lakes Baby Box Charitable Trust	Baby Box Project	\$20,000
Ronald McDonald House Charities New Zealand	Accommodation Subsidy - Central Lakes Families Jan 2021 - Dec 2021	\$9,000
Ronald McDonald House South Island	Programme Grant Jan 2021 - Dec 2021	\$119,250
Royal New Zealand Plunket Trust	Operational Grant Jul 2020 - Jun 2021	\$60,000
Salvation Army	Operational Grant Jul 2020 - Jun 2023	\$120,000
Southern Wellbeing Trust	GoodYarn Community Prog. Pilot Apr 2021 - Mar 2022	\$40,000
Southland Multiple Sclerosis Society	Operational Grant Jan 2019 - Dec 2021	\$2,076
Teviot Valley Rest Home Incorporated	CLT Resthomes Aquaria Jun 2018 - May 2021	\$18,990
The Brain Injury Association (Otago) Inc.	Operational Grant Apr 2019 - Mar 2022	\$11,726

The Southern Regions Branch of the Muscular Dystrophy	Operational Grant Jan 2021 - Dec 2021	\$3,745
The Stroke Foundation of New Zealand Limited	Operational Grant Jul 2019 - Jun 2022	\$8,250
Volunteer South	Operational Grant Apr 2021 to Mar 2022	\$70,000
Volunteer South	COVID-19 Emergency Grant	\$6,471
Wanaka Riding for the Disabled	Operational Grant Aug 2020 - Jul 2021	\$8,675
Wanaka Search and Rescue	Training and Equipment Apr 2021 - Mar 2022	\$30,000
Wanaka Search and Rescue	Training and Equipment Apr 2020 - Mar 2021	\$20,000
Wanaka Community Hub	COVID-19 Emergency Grant	\$14,165
Wheels to Dunstan	Replacement Vehicle	\$19,026
TOTAL		\$2,661,720

COMMUNITY RECREATION

Alexandra Squash Racquets Club	Plumbing & Bathrooms Rehabilitation	\$13,700
Arrowtown Bowling Club	Clubhouse Renovation	\$56,471
Central Otago Queenstown Trail Network Trust	Maintenance Fund	\$10,497
Central Otago Queenstown Trail Network Trust	Construction Fund	\$1,755,227
Challenge Wanaka	Programme Grant Challenge Wanaka 2021	\$21,620
Clyde Bowling Club	Kitchen Refurbishment	\$2,500
CODC- Property	Clyde Hall Kitchen and Bathroom Renovation	\$20,000
Cromwell Bike Park Inc	Stage 2 and 3	\$64,491
Cromwell Bowling Club Incorporated	Second Stage of Clubrooms Refurbishment	\$7,910
Dunstan Arm Rowing Club	Safety Boat	\$5,600
Lake County A&P Society Inc	Lake Hayes A&P Show 2021	\$15,000
Millers Flat Baths Incorporated	Roof for Waste Oil Tank and Bund	\$1,922
QLDC - Sport and Recreation	New Artificial Turf for Queenstown Events Centre	\$250,000
QLDC - Sport and Recreation	New Luggate Community Centre	\$750,000
Queenstown Trails Trust	Queenstown Trail Re-alignment Stage 1	\$566,112
Snow Farm NZ Limited	Schools and Community Hut	\$160,770
Snow Sports NZ Charitable Trust	Central Lakes Adaptive Snow Sports 2020	\$9,000
Sport Otago	Operational Grant Jul 2020 - Jun 2021	\$52,500
The Upper Clutha Sports Community Trust	Festival of Sport & Recreation 2020	\$5,000
The Wanaka Bowling Club Incorporated	Replacement Outdoor Mat	\$38,250
Upper Clutha Tracks Trust	Hawea Flat Link Track Upgrade	\$9,500
Wanaka Primary School	COPSSA Programme Grant Jan 2021 - Dec 2021	\$39,026
TOTAL		\$3,855,096

ARTS & CULTURE

Alexandra Community Arts Council	Central Lakes Arts Support Scheme (CLASS) Jul 2020 - Jun 2021	\$28,319
Aorere College Foundation	AFA Live Cinema Production	\$3,500
Arts Central	Central Lakes Arts Support Scheme (CLASS) Jul 2020 - Jun 2021	\$18,972
Arts On Tour NZ	Programme Grant 2021	\$14,636
Central Otago Regional Choir Incorporated	Spring Concert Series 2020	\$2,750
Creative Queenstown	Central Lakes Arts Support Scheme (CLASS) Jul 2020 - Jun 2021	\$61,239
Cromwell Combined Society of Arts & Crafts Incorporated	Improved Heating System for Pottery Building	\$851
LUMA	LUMA 2021	\$88,000
Michael Hill International Violin Competition	Wakatipu Music Festival	\$20,000
Roxburgh Entertainment Centre	Sound System	\$6,243
Showbiz Queenstown	Legally Blonde The Musical	\$25,980
Southern Lakes Arts Festival Trust	Festival of Colour 2021	\$82,000
St Bathans Area Community Association Incorporated	St Bathans Multi Arts Festival	\$3,500
Three Lakes Cultural Trust	Renewal Arts Project	\$30,000
Upper Clutha Community Arts Council	Central Lakes Arts Support Scheme (CLASS) Jul 2020 - Jun 2021	\$30,969
Yami Sounz Summit/Tuki Festival	Yami Sounz Summit 2021	\$22,765
TOTAL		\$439,724

ENVIRONMENT & HERITAGE

Central Otago Heritage Trust	Central Otago Oral History Pilot Project Aug 2019 - Jun 2021	\$8,345
Central Otago Ecological Trust	Green Skink Translocation	\$6,000
Lakes District Museum	Bank and Stables Gallery Strengthening and Restoration	\$425,126
Millers Flat Bakehouse Trust	Storeroom/Kitchen Authentication	\$8,177
Otago Goldfields Heritage Trust	Programme Grant Jun 2020 - Apr 2022	\$42,500
Paradise Trust	Barn Restoration	\$173,280
THE QT CATS	Cat Rescue, Bird Survival	\$7,000
WAI Wanaka	Operational Grant Jul 2020 - Jun 2021	\$55,000
Wheels at Wanaka	Wheels at Wanaka 2021	\$15,000
TOTAL		\$740,428

Total \$ 9,454,900

NOTE: Multi-year grants were also approved for the 2021/2022 year of \$1,819,517 and the 2022/2023 year of \$962,257.





Highlights Lake Dunstan Trail Opening



190 Waenga Drive, PO Box 138, Cromwell 9342, Central Otago, New Zealand
Freephone: 0800 00 11 37 | Phone: 03 445 9958 | Email: info@clt.net.nz

Proud owner of **Pioneer**
energy